



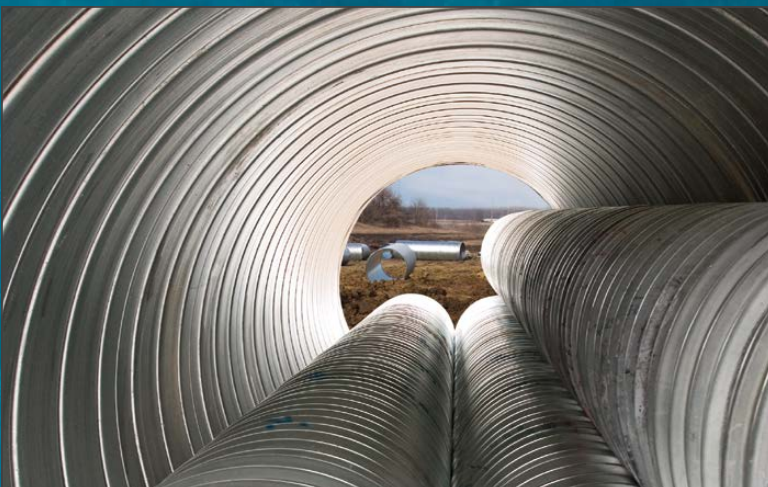
ENGINEERED  
PIPE SYSTEMS  
REFERENCE GUIDE

**CONTECH**<sup>®</sup>  
ENGINEERED SOLUTIONS  
A QUIKRETE<sup>®</sup> COMPANY



**STORM  
SEWER**

**SANITARY  
SEWER**



**CULVERTS/  
DRAINAGE**

**TANKS**

# EXPERIENCE. LEADERSHIP. DIVERSITY. PARTNERSHIP.

## OVER 100 YEARS OF EXPERIENCE!

Contech Engineered Solutions manufactures a variety of pipe solutions to help owners, engineers and contractors solve their project challenges. With over 100 years of experience manufacturing pipe products, Contech offers a wide range of options to meet your project-specific needs.

## CONTECH PIPE SOLUTIONS



STRENGTH



LONG SERVICE LIFE



JOINT TIGHTNESS



AVAILABILITY



HYDRAULICALLY EFFICIENT



DURABILITY

= LOWER COST OF OWNERSHIP

## Markets

Airports



Commercial



County/Municipal



Distribution/Data Centers



Energy



Environmental



Highways



Military



Mining



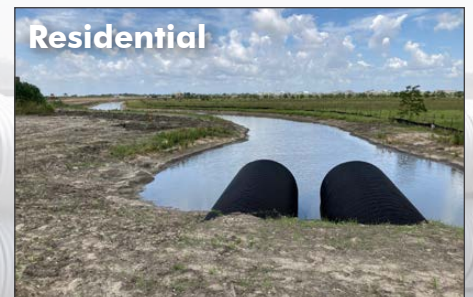
Parks & Recreation



Rail

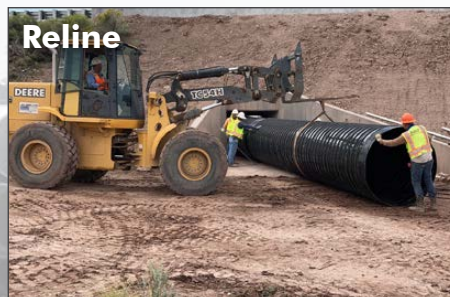


Residential





## Applications



# STORM SEWER APPLICATION



Managing stormwater is critical to protecting infrastructure, property, and the environment. Storm sewer pipes safely convey groundwater and rainwater from parking lots, streets, rooftops, and other impervious surfaces.

Contech delivers a comprehensive portfolio of storm sewer solutions tailored to meet the unique demands of each project. Our trusted product line—including ULTRA FLO®, A-2000™, and DuroMaxx® SRPE—provides the performance, strength, and flexibility needed for long-lasting drainage systems.

## BENEFITS:

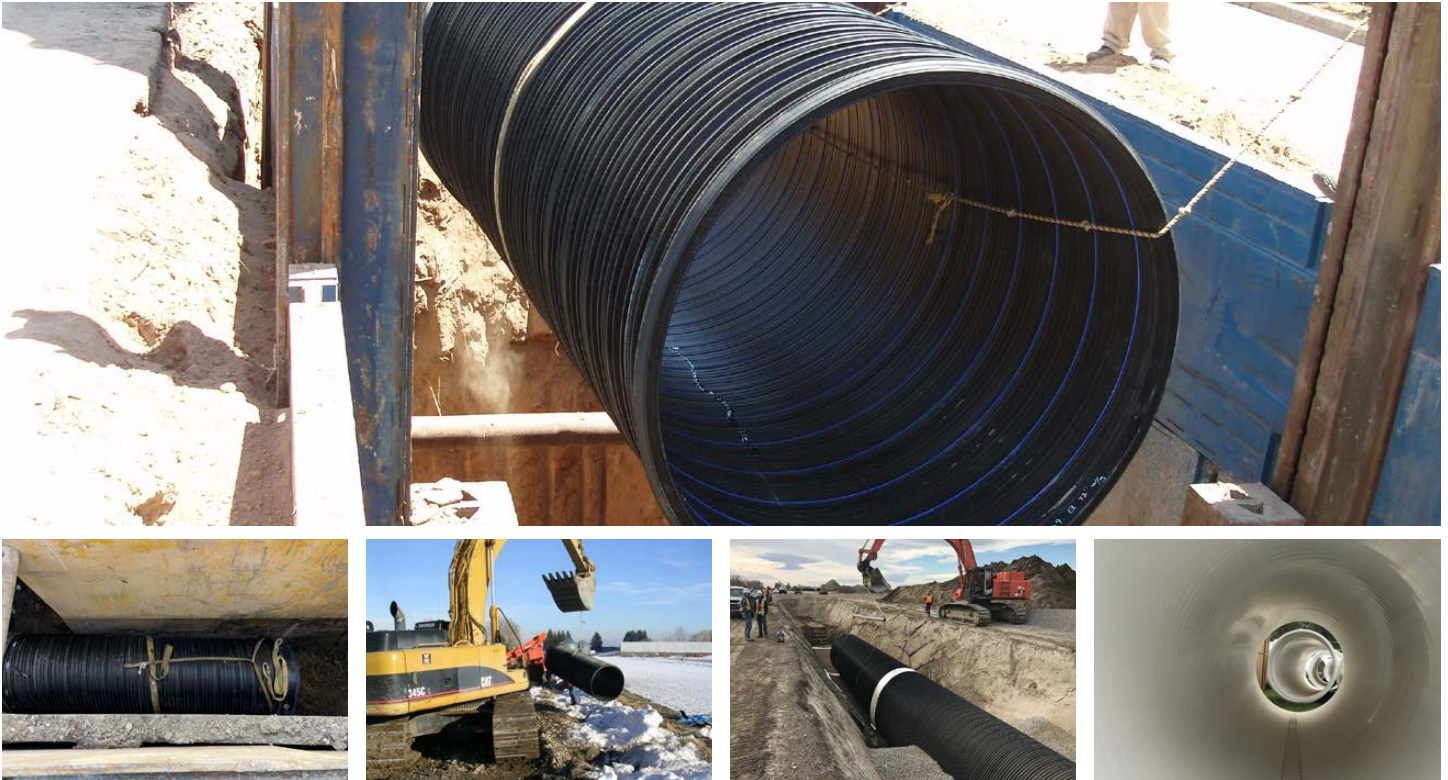
- Different material types available
- Proven, reliable performance in the field
- Superior structural strength for demanding applications
- Longer lengths and lighter weights for easier, faster installation
- Smooth interior walls for improved hydraulic capacity
- Custom fittings and coatings to fit specific project needs



Next-Gen Electric Vehicle (EV) Facility  
Western Tennessee  
25,000 LF of 48" - 108" diameter  
ALT2 ULTRA FLO®  
3,000 LF of 18" A-2000™ PVC  
Storm Sewer System



# SANITARY SEWER APPLICATION

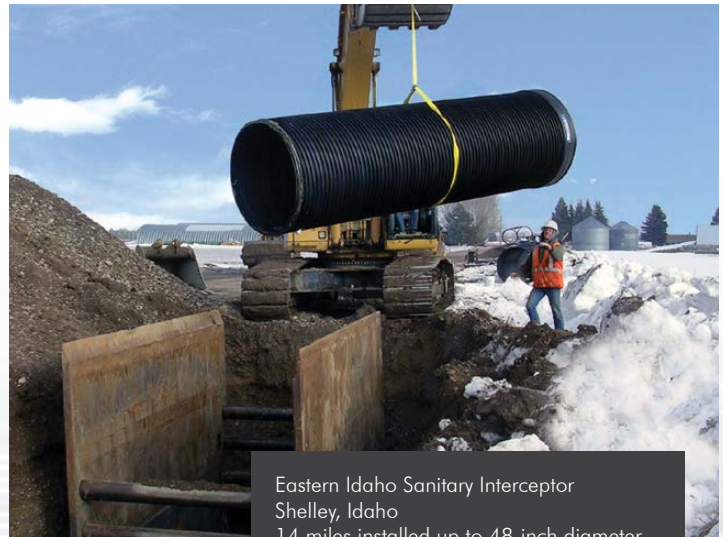


From laterals to collection systems to final treatment and discharge, the corrosive properties of sanitary sewer systems combined with the environmental costs of leakage require piping systems that provide long service life and verifiable watertight joints.

Contech's family of sanitary sewer products, from solid wall PVC SDR 23.5 and TRUSS PIPE® to A-2000™ PVC and DuroMaxx® SRPE, provide industry leading performance and 100 year+ service life at cost points that allow our customers to do more with ever shrinking budgets.

## BENEFITS:

- Hydraulically efficient - 0.012 Manning's "n"
- Diameters ranging from 4-inches to 120-inches
- Corrosive resistant in a variety of applications
- Leak-free
- Fabrication flexibility
- Cost-effectiveness



Eastern Idaho Sanitary Interceptor  
Shelley, Idaho  
14 miles installed up to 48-inch diameter

DuroMaxx® SRPE  
Sanitary Sewer System



# CULVERTS WITH END TREATMENT APPLICATION



For over 100 years of proven performance, Contech has been manufacturing the best solutions for culverts and drainage projects. Contech delivers a wide range of pipe materials, coatings, and gage thicknesses to meet your specific project needs.

Available in round to pipe-arch shapes up through 144-inch diameter, we have a variety of options.

## BENEFITS:

- Increased Hydraulics
- Improved Appearance
- Cost-effective Installation
- Low Maintenance
- Prefabricated Beveled / Step-Beveled Ends for Practical End Treatment
- Steel Flared End Sections to Prevent Inlet/Outlet Erosion

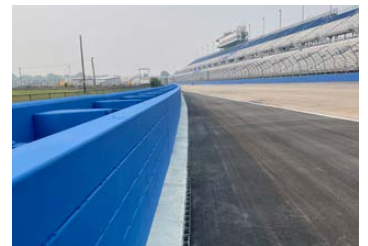


Hamilton Trail Culvert Replacement  
New Carlisle, Indiana  
84-inch diameter

CHS™ (Culvert Headwall System) with  
HEL-COR® ALT Culvert



# SURFACE RUNOFF APPLICATION



Slotted Drain™ is a unique pipe which removes sheet flow without multiple grades or water channeling devices.

The pipe is cut along a longitudinal axis, and a trapezoidal or straight-sided grate with reinforcing spacer plates is welded to form a 1 3/4-inch-wide slot opening. The slot collects runoff and channels it to the pipe below from which it flows to the appropriate outlet. The result is a practical, aesthetically pleasing inlet for the removal of surface water on streets, highways, and parking lots.

## BENEFITS:

- Structurally Sound, Supports H-20 Loading
- Improved Drainage Efficiency
- Fewer Collectors and Laterals, Lower Installed Cost
- Improved Safety
- Fewer Debris Problems, Lower Maintenance Cost



Jackson Hole Airport Runway Improvement  
Teton County, Wyoming  
~29,000 LF of 12-inch diameter

Slotted Drain™  
Surface Runoff System



# WATERTIGHT TANKS



With budget and site constraints, large diameter overflow projects can be tough for many agencies. DuroMaxx steel reinforced polyethylene (SRPE) pipe offers larger diameter solutions that are predictable with high-strength for deep covers, shape and deflection control and, of greater importance, resistance to corrosive effluent.

From combined sewer overflow (CSO)/sanitary sewer overflow (SSO) to glycol containment and detention, DuroMaxx® SRPE offers a watertight storage solution that is corrosive resistant and capable of 100+ years of service life.

## BENEFITS:

- Permanent watertight storage
- Up to 10.8 psi rating
- Unlimited size range – 10,000 to 1,000,000+ gallons

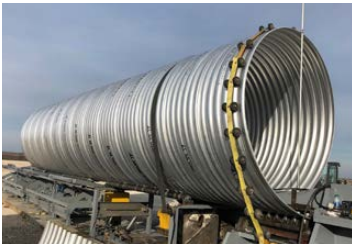


Crothersville CSO Improvement  
Crothersville, Indiana  
77,000 CF (580,000 gallons)

DuroMaxx® SRPE  
CSO/SSO Storage



# MOBILE PIPE® MODULAR MILL



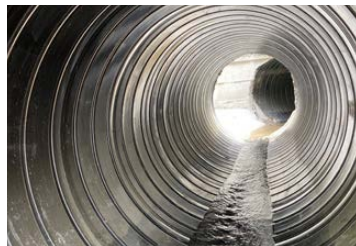
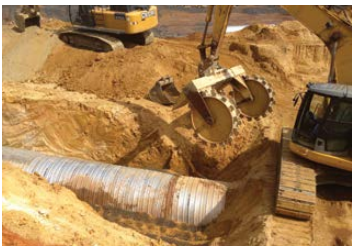
For remote site applications or large system manufacturing, MOBILE PIPE® modular mill can be delivered to the site location on trucks and assembled on-site for fast and cost-effective steel pipe manufacturing. MOBILE PIPE can produce HEL-COR®, ULTRA FLO® and Smooth Cor™ corrugated metal pipe in a variety of sizes. Diameters from 2 to 16 feet and lengths up to 35 feet can be accommodated.

## **BENEFITS:**

- Remote jobs
- Projects requiring large, continuous pipe production (large detention systems, windmill foundations, vertical shafts, caissons)
- Support for natural disasters where immediate deployment and rebuilding is required
- Sites with limited storage space or restricted traffic patterns



# ALUMINIZED ULTRA FLO® SPIRAL RIB PIPE



## Lower Cost Alternative to RCP Storm Sewer Pipe

ULTRA FLO®, a pipe with a smooth interior, is the material of choice for storm sewer applications and a lower cost alternative to reinforced concrete pipe. The smooth interior improves hydraulic capacity (Manning's "n" = 0.012, equal to concrete pipe) while the exterior box ribs provide structural strength.

ULTRA FLO® is available manufactured with a variety of coatings such as, Aluminumized Type 2 (ALT2), polymer coated, and aluminum material to meet a wide variety of environmental and service life requirements. For projects with limited headroom, ULTRA FLO® is available in pipe-arch.

FEATURES	BENEFITS
Smooth Interior	Manning's "n" = 0.012, equal to concrete pipe
Exterior box ribs	Shown to be equivalent to reinforced concrete pipe
Weights less than 10% of reinforced concrete pipe	Easier to install, faster installation
Longer lengths than reinforced concrete pipe	Fewer joints, faster installation, reduced cost
QUICK STAB® and coupling banded joints	No special tools or skills required, faster installation, reduced cost

Other metal solutions include: HEL-COR® corrugated steel pipe (CSP), Smooth Cor™ double wall CSP, and CORLIX® corrugated aluminum pipe (CAP) and Slotted Drain™ surface runoff systems.

For more information, please go to [www.conteches.com/cmp](http://www.conteches.com/cmp).

# A-2000™ POLYVINYL CHLORIDE (PVC)



## Sanitary Sewer and Drainage Pipe Solutions

Contech A-2000 is a profile wall pipe with a smooth interior and corrugated exterior, designed for high stiffness (46 psi minimum) to withstand trench loads. It features excellent hydraulic properties with a Manning's n of 0.009 and tight joints that prevent root penetration and leakage.

Made from high-quality PVC, A-2000 is abrasion and corrosion resistant, and unaffected by acidic or alkaline soils and chemicals in sewage discharge. This pipe offers superior advantages and cost-effective value compared to traditional sewer and drainage products.

FEATURES	BENEFITS
Manufactured from virgin PVC resin	100+ year design life, superior corrosion and abrasion resistance
Patented double-sealing gasketed joint	Watertight joints
Superior load capacity	Can be installed to depths of 30 feet or more
Manning's "n" = 0.009	Superior hydraulics; can be designed as a smaller and less expensive pipe
Lightweight and available in long lengths	Easier and less expensive to install

Other PVC solutions include: A2™ Liner, TRUSS PIPE® and Solid Wall Pipe.  
For more information, please go to [www.conteches.com/pvc](http://www.conteches.com/pvc).

# DUROMAXX® STEEL REINFORCED POLYETHYLENE (SRPE)



## The Strength of Steel. The Durability of Plastic.

It is the ideal combination of materials that makes DuroMaxx® an exceptional pipe. 80 ksi steel reinforcing ribs provide the strength, and pressure-rated polyethylene (PE) resin provides the durability. This combination of materials results in an extraordinarily strong and durable pipe. DuroMaxx® SRPE is designed with a smooth inner wall for outstanding hydraulic capacity and provides the properties you can count on for long-term service and performance in the most demanding environments.



**DuroMaxx®**  
STEEL REINFORCED PE TECHNOLOGY

FEATURES	BENEFITS
Steel reinforced ribs	Dependable strength for tough burial applications
Full HDPE encapsulation	Corrosion and abrasion resistance for 100+ service life
QuikJoint® steel reinforced 10.8 psi high performance and welded coupler joint and silt tight joint	Joint options for a variety of sites & applications
Smooth interior	Superior hydraulics; allows for minimum slope designs and longer runs
Light weight/longer lengths	Fast installation, costs savings
Availability	Nationwide manufacturing footprint



### Multiple Joint Options

DuroMaxx® QuikJoint® with UHP (ultra high performance) Technology achieves a level of joint performance that sets it apart from conventional pipe products. QuikJoint® is a steel reinforced bell & spigot joint with redundant gaskets designed to meet and exceed the highest standards of performance and offers in-ground testing. Additional options include: soil tight (ST) and welded coupler (WC) joints.

### Field Testable

QuikJoint® is an enhanced joint that is capable of in-ground psi testing to confirm correct installation and performance. With minimal tools and training, this testing can be conducted within minutes.



PRODUCT	DIAMETER	MATERIAL	MANNING'S N	STANDARD LENGTHS	MINIMUM COVER*
DuroMaxx® ASTM F2562 AASHTO MP-20 & MP-40	30" - 120"	Steel Reinforced Polyethylene	0.012	14' or 24'	Ø 30" - Ø 60" - 12" Ø 66" - Ø 78" - 18" Ø 84" - Ø 96" - 24" Ø 108" - 30" Ø 120" - 36"

\* H 20 and H 25 minimum cover is measured from top of pipe to bottom of flexible pavement or top of rigid pavement.

**DuroMaxx® SRPE is manufactured in accordance with ASTM F2562 and AASHTO MP-20 and MP-40.**



# STORMWATER SOLUTIONS

## Detention and Infiltration



### BENEFITS

- Maximizes land use – Frees up valuable surface area for development.
- Ideal for urban sites – Provides effective runoff control where space is limited.
- Supports LID goals – Promotes infiltration and groundwater recharge.
- Customizable design – Adapts to site-specific conditions and storage needs.
- Enhances property value – Increases usable land and development potential.

## Hydrodynamic Separation



### BENEFITS

- Effectively removes pollutants including sediment, hydrocarbons, trash and debris from stormwater runoff.
- Increases service life of by being used as pretreatment for detention, infiltration, reuse, and biofiltration.
- Used as standalone and end-of-pipe treatment.
- New or retrofit applications.
- Pretreatment is a best management practice to improve long-term performance in underground storage.

## Filtration



### BENEFITS

- Regulatory compliance – Meets increasingly stringent stormwater quality standards.
- Comprehensive pollutant removal – Targets trash, debris, oil, nutrients, metals, and hydrocarbons.
- Flexible application – Suitable for both new developments and retrofit projects.
- Proven performance – Advanced technology ensures reliable, high-efficiency filtration.
- Expert partnership – Backed by Contech’s technical support and sustainable design expertise.

## Bioretention/Biofiltration



### BENEFITS

- Space-efficient design – Reduces footprint by up to 95%, ideal for constrained urban sites.
- Superior water quality improvement – Effectively removes total suspended solids and nutrients.
- Simplified maintenance – Engineered for easier upkeep and long-term performance.
- Regulatory compliance – Backed by numerous local, state, and federal approvals.
- Versatile application – Integrates seamlessly into urban, commercial, and residential developments.

# BRIDGE & STRUCTURE SOLUTIONS

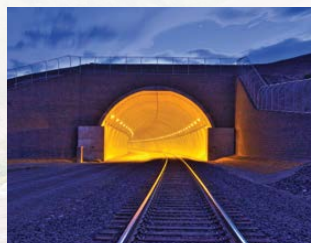
## Structural Plate



### BENEFITS

- Fast and easy installation – Designed for rapid assembly and reduced construction time.
- Proven strength and durability – Long-standing performance in steel and aluminum applications.
- Versatile design options – Available in multiple shapes, sizes, and treatments for diverse site needs.
- Cost-effective solution – Delivers long service life with low installation and maintenance costs.
- Ideal for rehabilitation – Well-suited for reline and repair projects with strong technical support.

## Precast Bridge Arches



### BENEFITS

- Accelerated bridge construction – Prefabricated units allow bridge installation in days, minimizing road closures.
- Superior quality control – Off-site fabrication ensures precision, consistency, and reliability.
- Cost-effective construction – Reduces material use and on-site labor for lower overall costs.
- Long service life – Durable precast concrete provides decades of low-maintenance performance.
- Minimized maintenance needs – Eliminates issues like deck icing and surface deterioration.

# Vehicular & Pedestrian Truss and Girder Bridges



## BENEFITS

- Rapid installation – Prefabricated modular design allows erection in as little as one to three days.
- Proven strength and safety – Engineered for long-lasting performance in vehicular and pedestrian applications.
- Cost-efficient construction – Prefabrication reduces field labor, welding, and overall project costs.
- Aesthetic versatility – Available in multiple styles, finishes, and decking options to complement any site.
- Certified quality – Manufactured in AISC Advanced Bridge Certified facilities with rigorous quality standards.

# Specialty Products



## BENEFITS

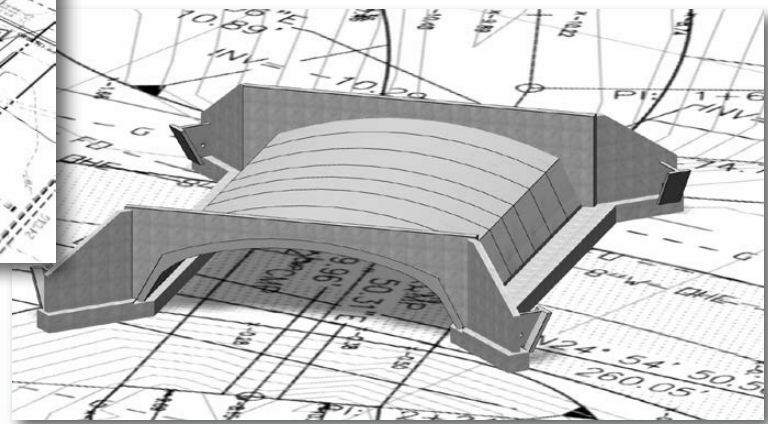
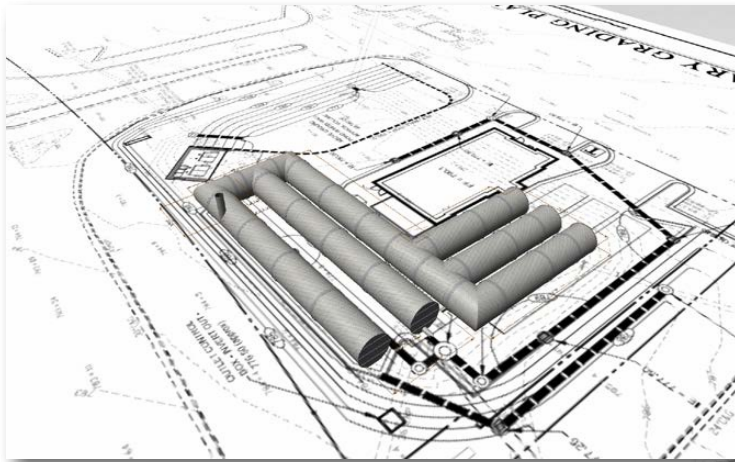
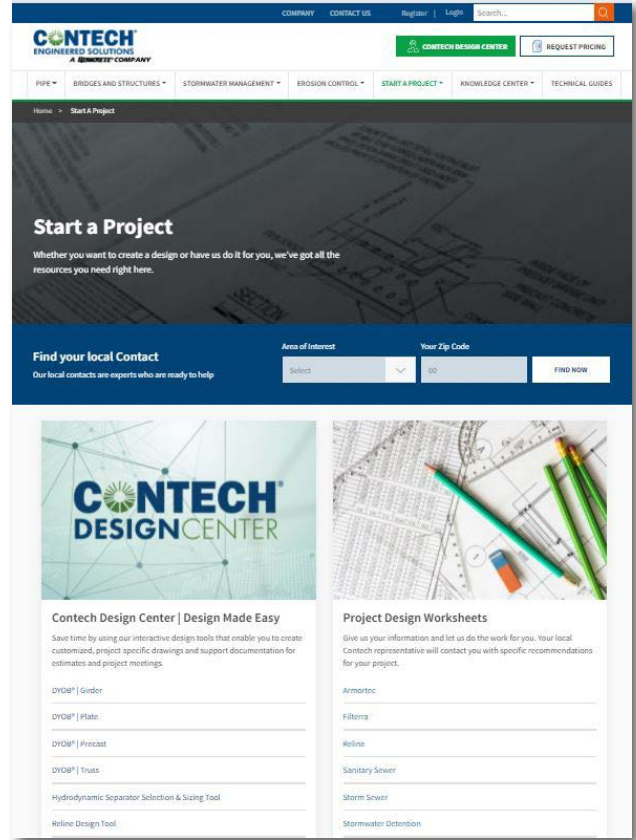
- Innovative solutions – Incorporates advanced technologies like ClearCast™ and RED-E-DUCT® for modern infrastructure needs.
- Enhanced safety – Products designed to protect workers and improve on-site safety during installation.
- Faster installation – Prefabricated systems streamline construction and reduce downtime.
- Versatile applications – Ideal for specialized uses such as bridge decks, duct banks, and tunnel relining.
- Reliable performance – Engineered for long-term stability and durability in demanding environments.

# CONTECH DESIGN CENTER

## DESIGN MADE EASY

Contech makes it easy for you to design your own project with our convenient suite of design your own project (DYO Project) tools.

- BIM Model, DWG file, site layout outputs.
- A 2D/3D environment with high resolution graphics including BIM model output.
- The ability to import a PDF site plan and design a system to scale over the plan.
- Instant access to customized, project specific drawings.
- Optimizes design and layout for cost efficiency.
- Shareable and collaborate easily.



[WWW.CONTECHES.COM/DESIGNCENTER](http://WWW.CONTECHES.COM/DESIGNCENTER)

**CONTECH**<sup>®</sup>  
**DESIGNCENTER**  
DESIGN MADE EASY



Kick off your project with confidence through Contech's Virtual Project Start-Up Meetings.

# MANUFACTURING AMERICA'S INFRASTRUCTURE™

Supporting every aspect of your project, from concept to installation, Contech is here to help! Our extensive network of local experts offers you comprehensive project management, technical support, and customer service. We'll help coordinate virtual project kickoffs and scheduled meetings, to ensure your project is a success!



### AGENCY/REGULATORY GUIDANCE

Our team is ready to provide you with expert advice and assistance on local regulatory requirements, resulting in faster approvals.



### SOLUTION DEVELOPMENT

Our engineers can review your requirements, weigh all options, and recommend the optimal solution to integrate with your site designs.



### TECHNICAL EXPERTISE

Our engineers assist by providing product-specific engineering calculations such as hydraulics, buoyancy, foundation reactions, and unit sizing.



### COST ESTIMATES

We can quickly provide engineers cost estimates to assist with your solution selection process.



### SITE SPECIFIC DRAWINGS

Our engineers can provide site-specific drawings for proposals, project meetings, and submittals, helping you be more efficient with your time.



### ON-SITE ASSISTANCE

Contractors know time is money, so we provide preconstruction meetings, delivery coordination, and on-site installation support to ensure a timely, smooth installation.

For more information, please reach out to your local Contech representative by visiting [www.conteches.com/contact](http://www.conteches.com/contact).





## MANUFACTURING AMERICA'S INFRASTRUCTURE™

We manufacture engineered solutions for complex civil infrastructure challenges and create lasting value for project stakeholders through unrivaled expertise, support and workmanship.

To us, it's about being a trusted partner for project owners, engineers and customers while doing meaningful work that helps build our communities.



STORMWATER  
SOLUTIONS



PIPE  
SOLUTIONS



STRUCTURE  
SOLUTIONS

**For more information, we have representatives for all 50 states.  
Please call 800-338-1122 or visit [www.conteches.com](http://www.conteches.com).**

NOTHING IN THIS CATALOG SHOULD BE CONSTRUED AS A WARRANTY. APPLICATIONS SUGGESTED HEREIN ARE DESCRIBED ONLY TO HELP READERS MAKE THEIR OWN EVALUATIONS AND DECISIONS, AND ARE NEITHER GUARANTEES NOR WARRANTIES OF SUITABILITY FOR ANY APPLICATION. CONTECH MAKES NO WARRANTY WHATSOEVER, EXPRESS OR IMPLIED, RELATED TO THE APPLICATIONS, MATERIALS, COATINGS, OR PRODUCTS DISCUSSED HEREIN. ALL IMPLIED WARRANTIES OF MERCHANTABILITY AND ALL IMPLIED WARRANTIES OF FITNESS FOR ANY PARTICULAR PURPOSE ARE DISCLAIMED BY CONTECH. SEE CONTECH'S CONDITIONS OF SALE (AVAILABLE AT [WWW.CONTECHES.COM/COS](http://WWW.CONTECHES.COM/COS)) FOR MORE INFORMATION.

© 2026 Contech Engineered Solutions LLC, a QUIKRETE Company  
All rights reserved. Printed in USA.



PipeSolutionsBro 01/26 MC DIGITAL