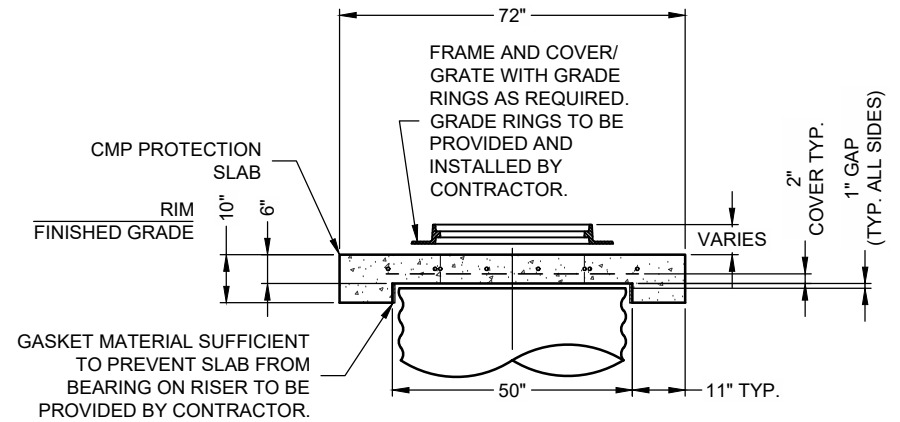


ELEVATION VIEW
(FLUSH MOUNTED)



ELEVATION VIEW

CHECK ONE:

☐ CAST-IN COVER

☐ SEPARATE COVER

CHECK ONE:

☐ 30"Ø COVER

☐ 24"Ø COVER

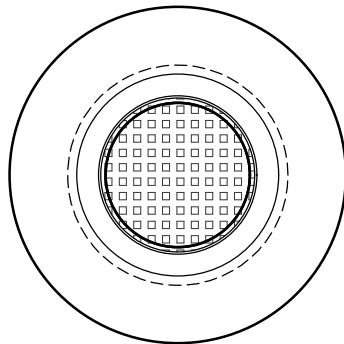
☐ 30"Ø GRATE

FABRICATION NOTES:

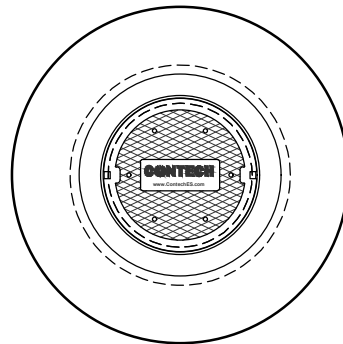
1. CONCRETE STRENGTH = 4,000 psi
2. REINFORCING STEEL - ASTM A615, GRADE 60, OR EQUIVALENT WELDED WIRE FABRIC.
3. NICE LIGHT BROOM FINISH FOR UNITS W/ CAST-IN FRAME AND COVER
4. LIFTERS IN SIDE FOR UNITS W/ CAST-IN FRAME AND COVER AND LIFTERS IN TOP SLAB FOR UNITS W/ SEPARATE COVER

GENERAL NOTES:

1. DESIGN LOAD HS20/HS25
2. EARTH COVER = 1' MAX
3. RISER CAP MUST BE ADEQUATELY SUPPORTED WITH PROPER BEDDING AS TO NOT TRANSFER LOADS ONTO RISER.
4. HEAVY PICK WEIGHT = 2,900 LBS



PLAN VIEW
(GRATED CASTING)
30"Ø HS20 LOAD RATED



PLAN VIEW
(SOLID CASTING)
30"Ø HS25 LOAD RATED
24"Ø HS20 LOAD RATED

CONTECH
ENGINEERED SOLUTIONS LLC
www.ContechES.com

9025 Centre Pointe Dr., Suite 400, West Chester, OH 45069
800-338-1122 513-645-7000 513-645-7993 FAX

72" OD CMP RISER CAP
UP TO 48" RISERS
PRECASTER: SEALY, TX

CONTECH
CMP DETENTION SYSTEMS

DATE: 04/07/2021

SCALE: NONE

PROJECT No.:

SEQUENCE No.:

DRAWN: TJS

CHECKED: KMR