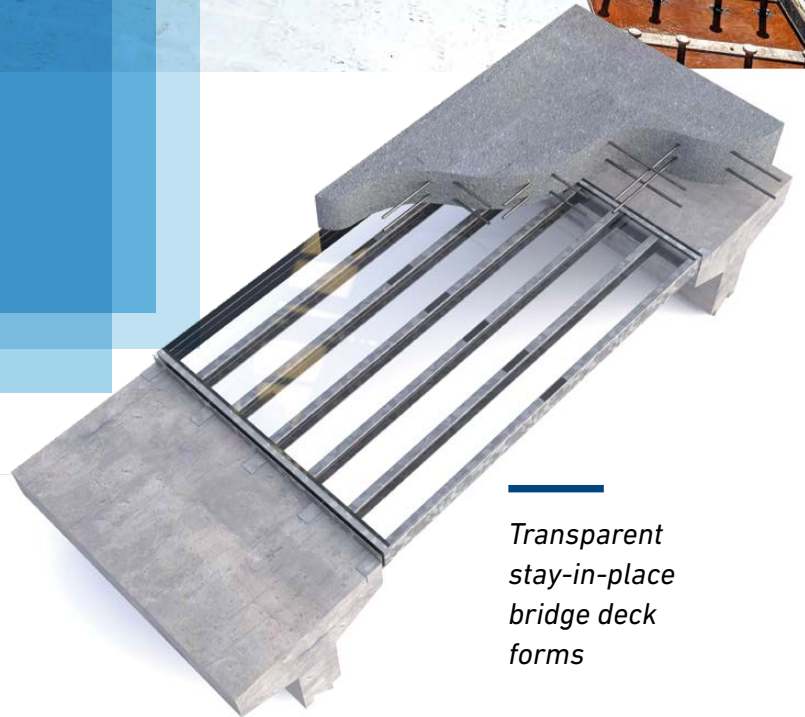


**ClearCast<sup>®</sup>**  
A breakthrough  
in bridge building  
technology.



Transparent  
stay-in-place  
bridge deck  
forms



## Let's be clear...

Our transparent stay-in-place forms improve safety while saving time and money on your next bridge deck pour.

---

**ClearCast® forms are the preferred forming method for bridge owners and contractors, balancing speed of construction, safety, and long-term preservation.**

**Our ClearCast forms:**

- + **Accelerate construction** on the critical path
- + **Reduce lane closure** days and user costs
- + **Shift crucial man hours** from forming and stripping wood forms to other higher value tasks on the critical path
- + **Allow for inspection** of the underside of the deck to help owners **sustain and preserve** a state of good repair over the life cycle of the bridge

---

### THE ClearCast DIFFERENCE

#### SPEED

- + Up to 5x productivity (compared to conventional removable form construction)
- + Eliminate stripping forms

#### SAFETY

- + Reduced exposure, less risk to labor
- + Less disruption to travelers, safer for public

#### INSPECTION & PRESERVATION

- + Inspect concrete during deck pour to confirm consolidation
- + Comply with National Bridge Inspection Standards and element level inspection
- + Accurately rate the condition of the deck over time
- + Make data driven decisions to extend service life

“ This definitely was time-saving, and that allowed us to move our crews on to other tasks on the schedule. Anytime you can install a framing system and not remove it, that saves time. We thought the stay-in-place form (system) was worth the cost. ”

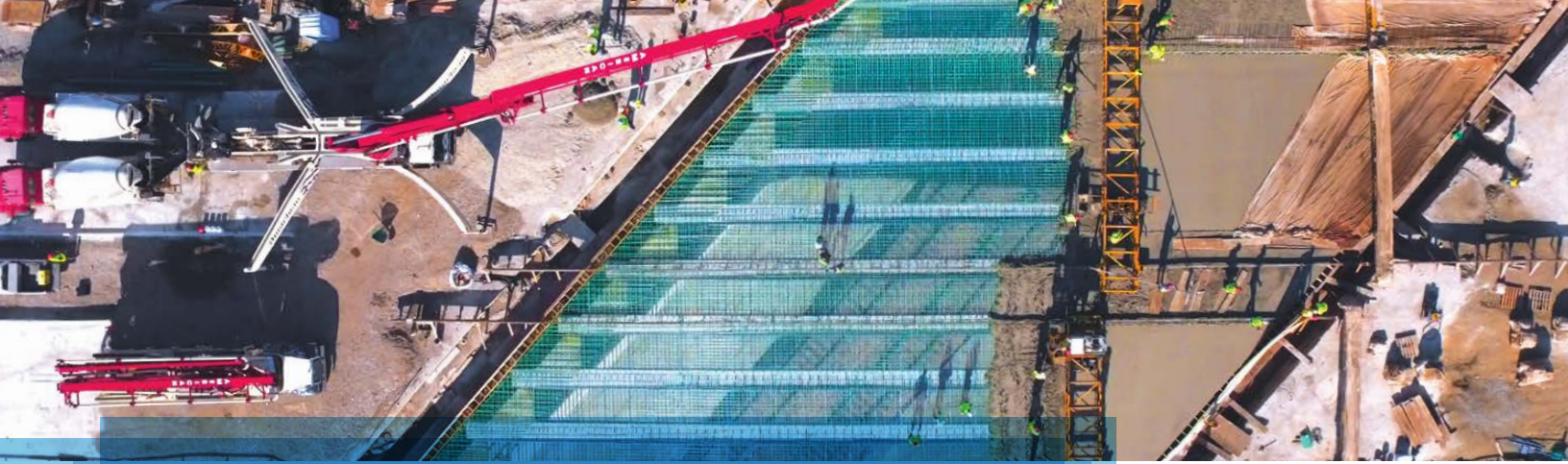
---

BRIDGE SUPERINTENDENT  
OF IOWA-BASED CONTRACTOR

“ We recommend the use of the ClearCast system on future projects based on what we saw during the deck pour and the inspector's experience. ”

---

DOT BRIDGE DESIGN  
DIVISION REPRESENTATIVE



// PROJECT EXPERIENCE //



**ISTHA EDENS SPUR (I-94)  
OVER METRA RAILROAD**

Cook County, IL //

INFRASTRUCTURE OWNER:



CONTRACTOR:



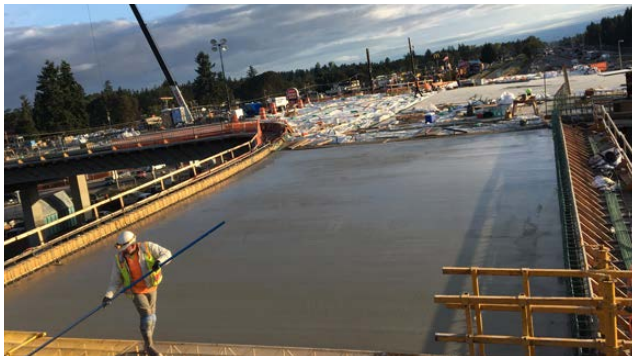
**U.S. 63 OVER CHICAGO  
CENTRAL & PACIFIC RAILROAD**

Waterloo, IA //

INFRASTRUCTURE OWNER:



CONTRACTOR:



**BERKELEY AVE/I-5 SOUTHBOUND  
ON-RAMP BRIDGE**

Lakewood, WA //

INFRASTRUCTURE OWNER:



CONTRACTOR:



## // CLEARCAST FORMS FAQs //

---

**Q: Can conventional wood forms be directly replaced by ClearCast forms?**

**A:** Yes, ClearCast forms are a 1:1 direct substitution for wood forms, allowing for the same deck thickness and reinforcement properties.

---

**Q: What range of beam spacing can ClearCast forms accommodate?**

**A:** Bay widths up to 8 feet can be accommodated with the typical ClearCast form. Bay width is defined as the distance between the face of top girder flanges. For wider bay widths, contact us for options.

---

**Q: Do ClearCast forms contribute to the structural capacity of the deck?**

**A:** No. Our stay-in-place forms are designed to carry the wet concrete and construction loads as a stay-in-place bridge deck forming system only.

---

**Q: What do the forms weigh?**

**A:** ClearCast forms plus girder attachments typically weigh 3 to 5 psf in total, adding minimal dead load to the bridge girders.

---

**Q: How do the forms connect to the bridge?**

**A:** ClearCast forms are set and screwed onto steel angles, similar to corrugated metal stay-in-place deck forms. Details are available for precast and steel bridge connection methods.

---

**More questions? Want to speak in person? Call us!**

800-338-1122 // [info@conteches.com](mailto:info@conteches.com)

