

CONTECH[®]
ENGINEERED SOLUTIONS
A QUIKRETE[®] COMPANY

Railway Solutions

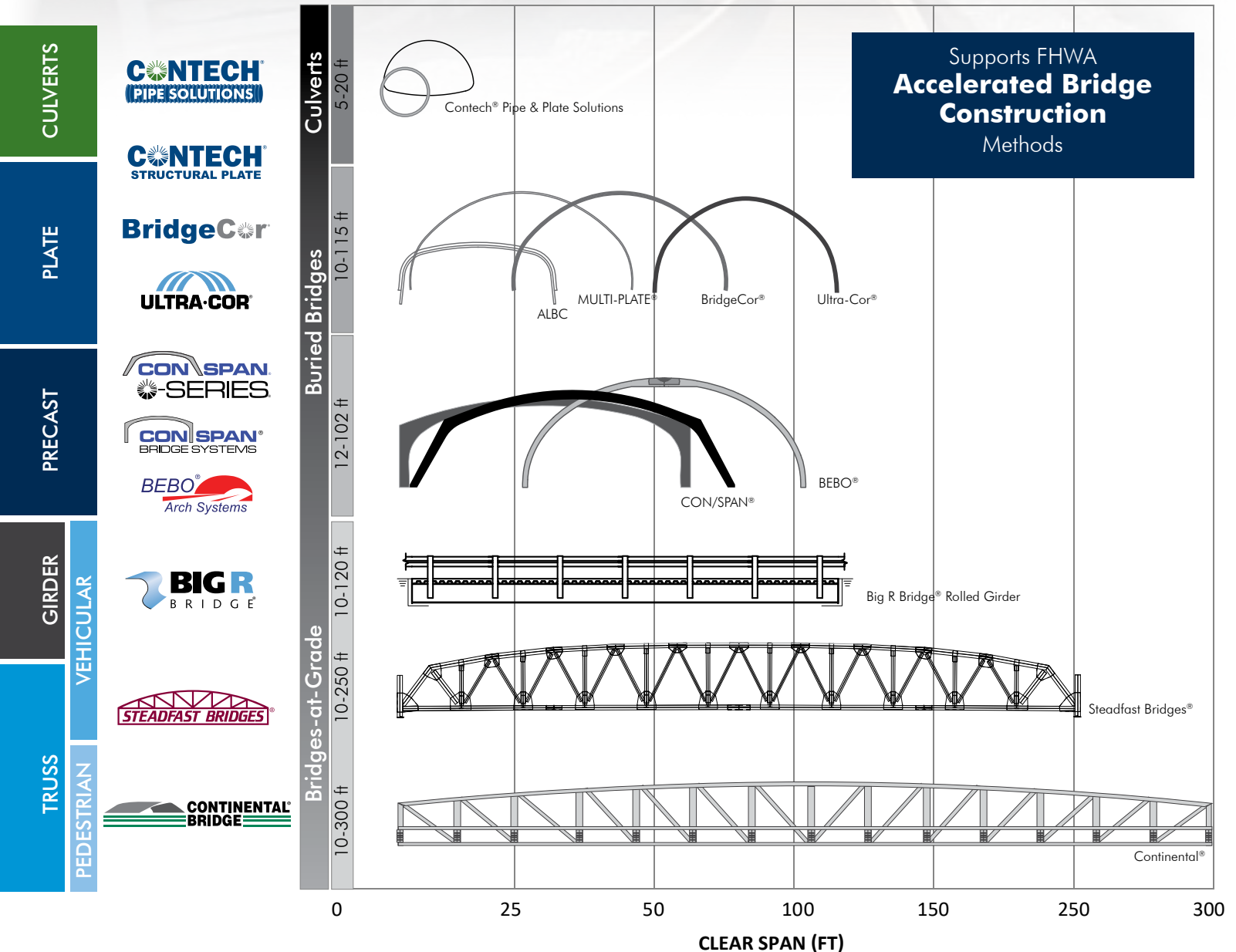


Railway Solutions

Contech® Engineered Solutions is the nation's leading producer of bridge, drainage, erosion control, retaining wall, sanitary, soil stabilization, stormwater and wastewater treatment solutions for the site development and rehabilitation markets. Contech products provide effective site solutions for projects with a variety of loading conditions, foundation requirements, soil and water environments as well as varied installation requirements, as it relates to bridge, pipe, erosion control, earth stabilization and stormwater applications.

Contech can help facilitate the design, development and the assembly of cost-effective railroad applications, including: railway overpasses and underpasses; stream crossings; prefabricated bridges; drainage and pipe options; stormwater treatment solutions; erosion control and retaining walls.

Clear Span Bridges & Structures



Bridges

Contech offers an unparalleled choice of structural plate, precast concrete arch and truss bridges for vehicular and pedestrian needs. Spans range from 5 feet to 300 feet. Our innovative prefabricated bridges minimize or eliminate track closure saving both time and money.

Railway applications include:

- Railroad Overpasses and Underpasses
- Grade Separations
- Pedestrian Traffic Separation
- Culvert and Stream Crossings

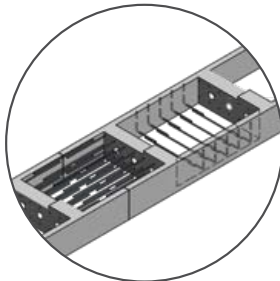
Precast

CON/SPAN® and BEBO® bridges can be adapted for use in tunnel applications or improving mine entrances. The arch shape is also ideal for supporting heavy loads and can be designed to AREMA specifications.

Contech CON/SPAN® and BEBO® bridges are fully engineered, precast modular component systems. The precast arch system, complete with headwalls, wingwalls and footings, delivers fast installation and is accompanied by extensive technical support.

- Complete precast system
- Outstanding span to rise ratio for wide, low crossings
- Effective in extreme loading applications
- Spans from 12 feet to 102 feet

EXPRESS® Foundations – provides the speed of precast with the economy of cast-in-place. EXPRESS Foundations can be used in combination with any of the Contech bridge systems, accelerating construction time and providing substantial cost savings.



Ease of Installation – Precast modules allow railroad tracks to remain in service during construction.



Railroad Overpass – Precast arch units support railroad loading over a roadway underpass.



Railroad Underpass – Precast arch units provide a perfect solution to vehicular/pedestrian access roads over railways.



Railway Tunnel – This BEBO structure allowed enough clearance to accommodate the construction of a second railroad track.

Bridges & Structures

Structural Plate

Contech's steel and aluminum structural plate offerings have a long history of strength, durability, economy and AREMA acceptance. These structures meet a wide range of site-specific challenges with a variety of sizes and shapes available.

MULTI-PLATE® bridges consist of field-bolted galvanized steel plates with a 6" x 2" corrugation.

BridgeCor® consists of field-bolted galvanized steel plates like MULTI-PLATE, but are manufactured in a 15" x 5 1/2" corrugation. The deeper corrugation provides additional strength and stiffness for wider, clear span bridges.

SUPER-SPAN™ bridges utilize the same plates as MULTI-PLATE but have special features that allow for larger spans and a different family of shapes.

Aluminum Structural Plate/SUPER-PLATE® bridges utilize a 9" x 2 1/2" corrugation along with external reinforcing ribs (when required) to handle required design loads. ALSP is made from aluminum material for added durability in harsh environments.

Structural Plate applications include the following:

- High combined live and dead loads
- Deep cover / Railroad loading applications
- Reline / Rehabilitation
- Vehicular tunnels / Grade separations
- Spans to 65 feet
- River and stream crossings

Tunnel Liner Plate

Contech 2-Flange Liner Plate provides full circumferential load transfer with lapped joints for more effective ring stiffness.

Given these product attributes, Liner Plate provides for a safe working environment and a time-proven structural design for new utility tunnels, relining structures under highways and railroads and lining vertical shaft excavations.



MULTI-PLATE® offers a wide range of shapes and sizes for specific site considerations – pipe arch with concrete paved inverts shown.



BridgeCor® structural plates unique corrugation allows for spans of up to 60 feet – ideal for railroad underpasses or large clearance areas.



Liner Plate & CMP caissons for rail utility lines.



Contech Signal Guards



Contech Tunnel Liner Plate offers optimum wall profile and shape stability for relining under live railroads while avoiding down time and lost revenue.

Bridges & Structures

Truss

Long clear spans and small footprints let you cross environmentally sensitive areas and wetlands with little or no impact on the environment. These prefabricated systems promise low maintenance and fast installation.

Steadfast® Vehicular Truss Bridges — provide economical solution due in part to the high strength to weight ratio of steel that meet ASHTO design specifications.

Applications include the following:

- County roads going over railroads
- Ability to accommodate skewed alignments
- Roadway widths up to 50 feet
- Vehicular clear spans from 10 feet to 300 feet

Big R® Modular Bridges — custom options to meet any site-specific requirements able to meet HL-93 design specifications due in part to the high strength to weight ratio of steel.

Continental® Pedestrian Truss Bridges — range from basic structures to unique design.

- Applications include footbridges, pipe support structures, railway overpasses and other innovative site solutions

Metal Walls

Contech Bin-Wall™ is a system of adjoining, closed-faced, 10-foot wide bins that flex against minor, unforeseen ground movements. The bins are sturdy, lightweight steel that are easily bolted together at the job site and in difficult or restrictive conditions. A fully enclosed face protects against the loss of fill material.

Contech Metric Sheeting is a lightweight sheeting that provides an economical and structurally sound solution for several types of temporary and permanent structures. Contech's wider sheets have fewer interlocks resulting in less permeability. In addition, Contech offers heavy gage Zee Sheeting to accommodate deeper bulkhead and higher grade separations.



Skywalk Railway Overpass – Enclosed skywalk overpass carries pedestrian traffic over railroad.



Big R Modular Bridges – available in HL-93 vehicular loading and custom options available to accommodate site-specific requirements.



Retaining Walls – Bin-Wall is a lightweight steel that is easily assembled to fully enclose fill material for a solid wall solution.

Earth Stabilization

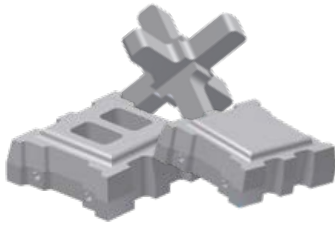
Hard Armor Solutions

ArmorFlex®

ArmorFlex® is an engineering alternative to traditional channel reinforcement, such as riprap or cast-in-place concrete. It is a flexible, interlocking matrix of dry-cast concrete blocks of uniform size, shape and weight. The matrix is laced with a series of cables, which allows for the placement of large mats of block. ArmorFlex systems combine porosity, flexibility, vegetation encouragement and habitat enhancement in a hard armor solution.

A-Jacks®

A-Jacks® provide an excellent solution for bridge scour protection around piers and bridges, ensuring crucial erosion control around structures that support railway systems.



ArmorFlex is easy to install and has a low life-cycle cost when compared to other permanent solutions.

Erosion Control

Turf Reinforcement Mats

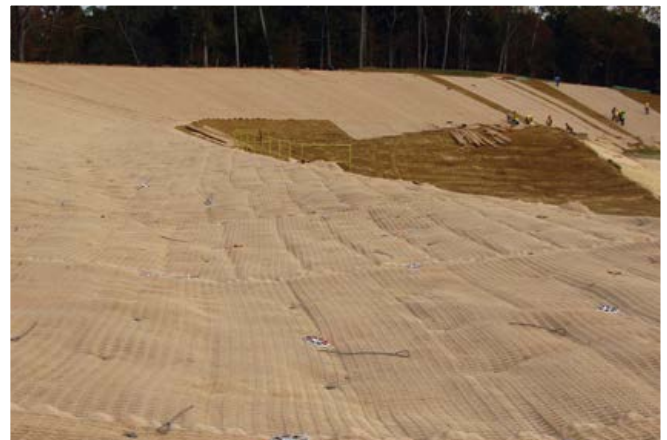
Contech's Turf Reinforcement Mats (TRMs) are easy to install with no heavy equipment required. They are more cost-effective than rip-rap and are stabilized against ultraviolet (UV) degradation.

ArmorMax® Anchored Reinforced Vegetation System

ArmorMax® Anchored Reinforced Vegetation System is the most advanced flexible armoring technology available. Consisting of our woven three-dimensional High Performance Turf Reinforcement Mat with X3® fiber technology and earth percussion anchors, you can count on the ArmorMax system to hold its ground.



A-Jacks® articulating concrete blocks are an excellent solution for scour protection around piers and bridge structures.



ArmorMax® provides a high performance turf reinforcement solution where stabilization is crucial to maintain.

Collector Pans

Collector Pans

Effective Pollution Control

Contech Collector Pans™ are modular systems of steel pans and drains easily installed on existing or new tracks to catch spilled or leaking fuel, oils, greases and other pollutants.

At hundreds of installations within the railroad and manufacturing industries, Collector Pans prevent liquid pollution at fueling stations, ready tracks, tank car loading and unloading areas, washing facilities – anywhere oils, chemicals and other pollutants can drip from standing cars and find their way into sewers and streams.

Long Service Life

Contech's galvanized or black steel Collector Pans are completely reusable when yard layouts, fueling facilities or ready tracks change. And if an accident damages one, its modular construction means that only the damaged section needs to be replaced.

Coated and stainless steel pans are available by request.

Easy Field Installation with Minimal Downtime

No special installation skills are needed. A competent foreman, welder and four or five unskilled laborers can easily install a system. It involves only a minimal amount of track downtime contrasted with the installation of concrete aprons – which require weeks of expensive and wasted time.

Customized Solutions

Contech has several standard collection pan configurations that you can choose from to meet your needs and your budget. We also custom fabricate to your specifically engineered and designed containment needs.

Contech supplies Collector Pans to all of the U.S. Class I railroads and numerous industrial customers. We've provided custom pan configurations to the likes of BNSF and Union Pacific Railroads and British Petroleum (BP) and can provide customized solutions to fit your site requirements.



Collector Pans – Customized Type 2 Collector Pans for a refueling station.



Collector Pans – Provide the ideal solution to control spills at fueling stations.



Contech Collector Pans can be customized to meet site-specific requirements.

Drainage/Waste Conveyance

Corrugated Metal Pipe (CMP)

Contech provides a full range of CMP products for culverts, storm sewers, and conduits to withstand severe environmental conditions and high cover. Contech **annular corrugated (riveted) pipe** has been accepted in the industry for over 100 years and is manufactured in gages 8* to 16. Contech also manufactures **HEL-COR®** and **ULTRA FLO®** (Manning's "n" value of 0.012) **CMP** – in galvanized, ALT2, polymer coated steel as well as aluminum to repeatable and exacting standards, including AREMA. Additionally, **Smooth Cor™** which consists of a standard corrugated steel pipe as its structural exterior shell and has a hydraulically smooth steel liner, provides an excellent alternative to reinforced concrete pipe in weak soils and steep slopes.

Features include:

- Lightweight, easy handling with fast, economical installation
- Superior strength to weight ratio
- Diameters to 144" with lengths of up to 48' and more
- Round and pipe arch shapes

EXPECTED CMP SERVICE LIFE			
CMP Material	Expected Pipe Service Life	Site Environmental Conditions	Max FHWA Abrasion Level ¹
Galvanized CSP	25 - 50 Years	6.0 ≤ pH ≤ 10.0 2000 ≤ r ≤ 8000 (ohm-cm)	Level #2
Aluminized Steel Type 2 CSP	Min. 75 Years ²	5.0 ≤ pH ≤ 9.0 r > 1500 ohm-cm	Level #2
Polymer-Coated CSP	Min. 100 Years	5.0 ≤ pH ≤ 9.0 r > 750 ohm-cm	Level #3
	Min. 75 Years	4.0 ≤ pH ≤ 9.0 r > 750 ohm-cm	
	Min. 50 Years	3.0 ≤ pH ≤ 12.0 r > 250 ohm-cm	
Aluminum Alloy	Min. 100 Years	4.0 ≤ pH ≤ 9.0 r > 500 ohm-cm	Levels #1, #2 or #3

NOTES: ¹ Refer to Table 9.3 for definition of FHWA Abrasion Levels.

² Under certain circumstances an expected service life of 100 years can be attained.

Contech Deck Drain

Railroad bridges are constructed with ballast instead of pavement, and Deck Drain is used to collect and transport water off of the bridge.

- Corrugations – 2 2/3" X 1/2"
- Gage (thickness) – 14 or 12
- Material – galvanized or galvanized with asphalt coating
- Diameter – 8" half round

DuroMaxx® SRPE

DuroMaxx® offers the strength of steel and the durability of pressure rated Polyethylene Resin (PE). With a smooth inner wall for outstanding hydraulics, DuroMaxx provides the properties you can count on for long term service and performance in the most demanding environments.

Features include:

- Superior durability
- High strength steel reinforcement
- Light weight, fast installations
- Smooth interior wall: Manning's "n" value = 0.012
- Diameters to 120"



Contech CMP – Provides fast, economical installation.



Use Contech Deck Drain to collect and transport water from the surface of the rail road bridge.



DuroMaxx® Steel Reinforced Polyethylene (SRPE) pipe.

* ALT2 coating not available for 8 gage riveted pipe.

Drainage/Waste Conveyance

A-2000™

With the increasing demands on our drainage and storm sewer systems, products designed and proven to provide the best performance over the project life cycle are needed. A-2000™ PVC drainage pipe offers all of the initial cost advantages associated with thermoplastic pipe when compared with RCP but without the performance limitations of corrugated M294 HDPE pipe.

Features include:

- Superior pipe stiffness
- Lightweight, easy handling
- Standard watertight joints



A-2000™ PVC Pipe with Contech Collector Pans provide perfect solution for effectively containing waste and other harmful pollutants.

Stormwater Management:

Treatment

Meet NPDES stormwater and SPCC requirements, reduce risks and avoid costly fines with our expansive product line of stormwater treatment products.

Filterra® Bioretention System is an engineered biofiltration device with components that make it similar to bioretention in pollutant removal and application, but has been optimized for high volume/flow treatment in a compact system. Its small footprint allows Filterra to be integrated into landscaped areas, parking lots, and streets on highly developed sites. Filterra is adaptable and can be used alone or in combination with perforated pipes or chambers to optimize runoff reduction.

The Stormwater Management StormFilter® – Meets the most stringent regulatory requirements using a variety of media that can target fine particulates, heavy metals, and oil and grease. Siphon-actuated filter surface cleaning extends maintenance intervals.

Jellyfish® Filter – A stormwater quality treatment technology featuring high surface area and high flow rate membrane filtration at low driving head.

VortClarex® Oil Water Separator – Utilizes coalescing media to efficiently remove freely dispersed oil and other liquid pollutants from runoff.

CDS®, Vortechs®, VortSentry® HS – Widely accepted for effective solids removal. Especially efficient on gross solids, trash, and debris.

Detention/Infiltration

Control and reduce runoff from maintenance, service, washing, fueling and inspection areas with our underground stormwater detention and infiltration systems. With a variety of materials such as CMP, plastic, and concrete, our suite of products provides economical storage options that can accommodate any footprint need.



Filterra® offers a cost-effective stormwater treatment system featuring easy installation and simple maintenance at rail and intermodal yards.



CMP Detention Systems are customizable and may be designed for heavy loading and high maximum cover.

Storm Sewer, Culvert & Bridge Repair

Contech can help assist with your efforts to acquire, improve or rehabilitate intermodal or rail facilities, including storm sewer, culvert and bridge repair. The option to slip line or repair existing storm sewers, culverts or bridges is more cost-effective and just as structurally effective as replacement. We offer a variety of rehabilitation solutions to fit your needs.

Corrugated Metal Pipe – HEL-COR®, ULTRA FLO® and Smooth Cor™

Restoration of failed or deteriorating pipe can be accomplished by relining with ULTRA FLO® or Smooth Cor™. Their low-wall profile can yield an inside diameter that approaches the original pipe, while the hydraulic capacity is improved. Contech's corrugated metal pipe is light weight and can be provided in custom lengths to meet individual site conditions, making the lining process easier.

A2™ Liner

The increasing rate of sanitary and storm sewer deterioration requires an efficient and cost-effective rehabilitation solution. Contech A2™ Liner Pipe uses proven trenchless installation methods to slipline existing sewer lines without the disruptions associated with open trenching — while increasing productivity and lowering costs.

Features include:

- Lightweight, easy handling
- Fast, economical installation
- Manning's "n" factor of 0.009

DuroMaxx® SRPE Liner

DuroMaxx® steel reinforced polyethylene (SRPE) is designed with a smooth inner wall for outstanding hydraulic capacity, and provides the properties you can count on for long-term service and performance in the most demanding environments. By providing the strength of steel and the durability of plastic, DuroMaxx® is an optimal reline solution in many situations

Features include:

- Manning's "n" of .012 restores hydraulic capacity.
- Eliminates costly bypass operations as normal flow is maintained.
- Provides excellent durability and resistance to abrasion.
- Meets the joint tightness test requirements of ASTM D3212.



ULTRA FLO® corrugated metal pipe is often used to rehabilitate failing culverts and storm sewers.



HEL-COR® ALT2 CMP was used to reline an existing timber beam bridge to avoid lengthy track down time and allow for a full structural repair.



DuroMaxx® Steel Reinforced Polyethylene (SRPE) pipe is slip lined to provide a structural lining.

Railroad Rehabilitation & Improvement

Extend Service Life of Aging Infrastructure

Tunnel Liner Plate

Contech Tunnel Liner Plate provides optimum stability and protection when constructing new utility tunnels, relining structures under highways and railroads, and lining vertical shafts. It offers the highest continuous ring stiffness and high compression joint strength. The 2-Flange Tunnel Liner Plate has effective stiffness that is more than double the stiffness of the same gage of 4-Flange Liner Plate.

Features include:

- Offering larger spans
- A different family of shapes



Contech Tunnel Liner Plate was used to fully restore this pedestrian underpass directly under a fully operational rail line.

Variety of Products for More Efficient Rehabilitation

	SPAN RANGE	PRODUCT	DESCRIPTION
DRAINAGE	12" – 36"	A2™ Liner Pipe	PVC corrugated pipe with smooth interior wall
	18" – 102"	ULTRA FLO®	Spiral rib aluminum, aluminized and polymer-coated steel pipe
	12" – 144"	Corrugated Metal Pipe	Corrugated aluminized and polymer-coated steel and aluminum alloy helical and riveted pipe
	30" – 120"	DuroMaxx®	Steel reinforced polyethylene pipe
SEWER	12" – 36"	A2™ Liner Pipe	PVC corrugated pipe with smooth interior wall
	30" – 120"	DuroMaxx®	Steel reinforced polyethylene pipe
STRUCTURES	4' – 20'+	Tunnel Liner Plate	Steel and aluminum 2- flanged plate
	5' – 23'+	ALSP MULTI-PLATE®	Aluminum structural plate Galvanized steel structural plate
	19'-5" – 65'	SUPER SPAN™ SUPER-PLATE® BridgeCor®	Galvanized steel structural plate long spans Aluminum structural plate long spans Deep corrugation galvanized steel structural plate
	12' – 102'	CON/SPAN® and BEBO®	Precast concrete arches



Contech can assist with your efforts to improve or rehabilitate intermodal or rail facilities, including components of tracks and surrounding infrastructure in yards and buildings.



MANUFACTURING AMERICA'S INFRASTRUCTURE™

We manufacture engineered solutions for complex civil infrastructure challenges and create lasting value for project stakeholders through unrivaled expertise, support and workmanship.

To us, it's about being a trusted partner for project owners, engineers and customers while doing meaningful work that helps build our communities.



STORMWATER
SOLUTIONS



PIPE
SOLUTIONS



STRUCTURE
SOLUTIONS

**For more information, we have representatives for all 50 states.
Please call 800-338-1122 or visit www.conteches.com.**

NOTHING IN THIS CATALOG SHOULD BE CONSTRUED AS A WARRANTY. APPLICATIONS SUGGESTED HEREIN ARE DESCRIBED ONLY TO HELP READERS MAKE THEIR OWN EVALUATIONS AND DECISIONS, AND ARE NEITHER GUARANTEES NOR WARRANTIES OF SUITABILITY FOR ANY APPLICATION. CONTECH MAKES NO WARRANTY WHATSOEVER, EXPRESS OR IMPLIED, RELATED TO THE APPLICATIONS, MATERIALS, COATINGS, OR PRODUCTS DISCUSSED HEREIN. ALL IMPLIED WARRANTIES OF MERCHANTABILITY AND ALL IMPLIED WARRANTIES OF FITNESS FOR ANY PARTICULAR PURPOSE ARE DISCLAIMED BY CONTECH. SEE CONTECH'S CONDITIONS OF SALE (AVAILABLE AT WWW.CONTECHES.COM/COS) FOR MORE INFORMATION.

