



**CONTECH**  
ENGINEERED SOLUTIONS  
A QUIKRETE® COMPANY

HEL-COR® Deck Drain

**CONTECH**  
PIPE SOLUTIONS

# HEL-COR® Deck Drain

## Efficient Drainage Solution for Railroad Bridges

HEL-COR® Deck Drain is a perforated drain system used in the construction of railroad bridges. This efficient system utilizes half-round perforated corrugated steel covers with a steel plate bottom to drain the ballast at the bottom of the railroad bridge.

Deck Drain is manufactured with steel because of its superior strength and long-term durability compared to plastic drain products. HEL-COR® Deck Drain is a proven solution and has been used in railroad bridge construction for decades.

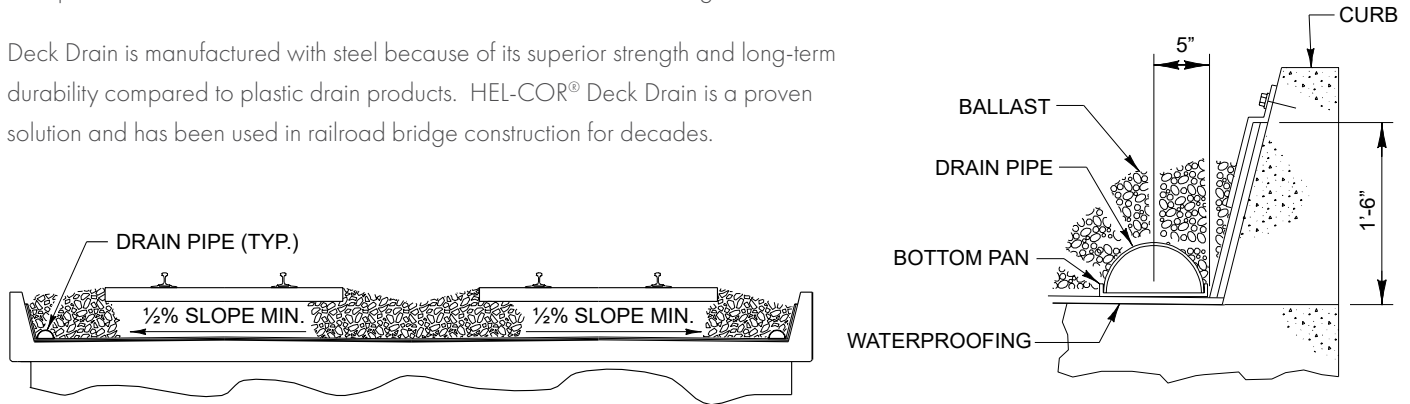


FIGURE 1. Typical cross section of Deck Drain used for drainage for a railroad bridge.

## Standard Deck Drain

Deck Drain corrugated covers are made up of 8" half round span in 12-gage, 14-gage, or 16-gage galvanized steel, 24" long after overlap. 14-gage is the most popular thickness. The bottom pan is made from 12-gage galvanized steel. Standard pan lengths are 10' long. The galvanized Deck Drain can also be asphalt coated.

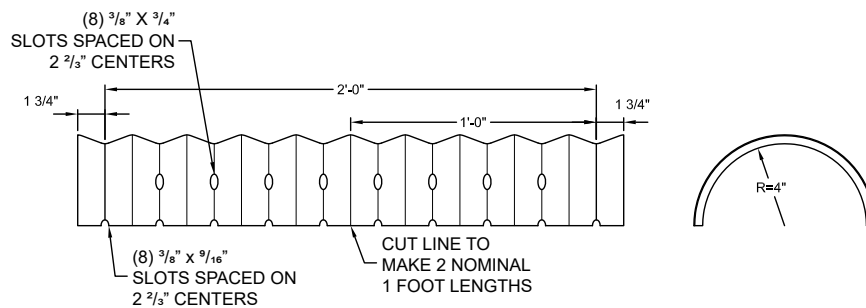


FIGURE 2. Standard Deck Drain Detail

Deck Drain covers are available in 2' long lengths. The end corrugations are simply overlapped in the field for the connection. Adjustments for length can be made up by overlapping additional corrugations to make up site specific non-standard run lengths.

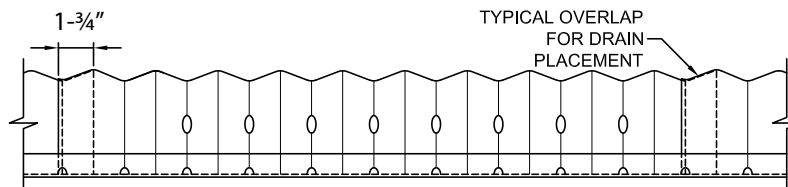


FIGURE 3. Deck Drain Typical Overlap Connection

## Deck Drain Outlet

Deck Drain covers for the outlet sections can be made from solid or perforated steel. 14-gage end bulkheads are attached at the end of the deck drain outlet. Outlet pipe diameters are 8" diameter or less.

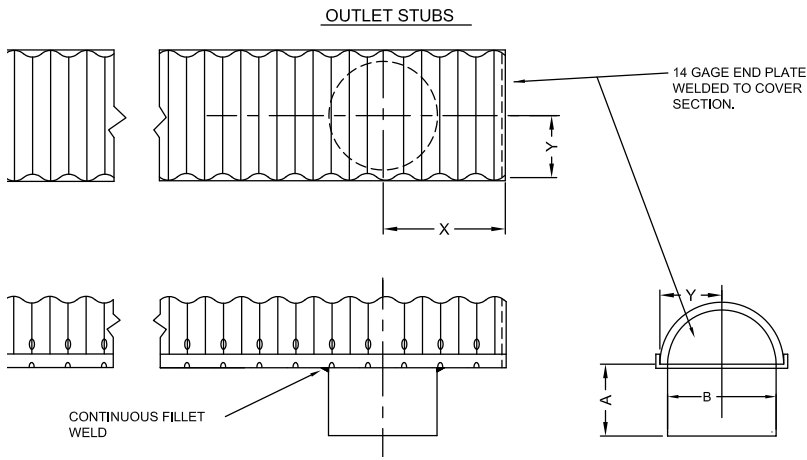


FIGURE 4. Deck Drain Outlet Stubs



## Special Deck Drain Sizes

Special Deck Drain spans are available in 12", 15", and 18" half round with lengths of 24" long after overlap. The perforation pattern is different than the standard 8" perforation pattern. Contact your local Contech Sales Engineer for drawings and specifications.



\*AASHTO LRFD Bridge Design Specification and AASHTO Standard Specification for highway bridges.



### MANUFACTURING AMERICA'S INFRASTRUCTURE™

We manufacture engineered solutions for complex civil infrastructure challenges and create lasting value for project stakeholders through unrivaled expertise, support and workmanship.

To us, it's about being a trusted partner for project owners, engineers and customers while doing meaningful work that helps build our communities.



STORMWATER  
SOLUTIONS



PIPE  
SOLUTIONS



STRUCTURE  
SOLUTIONS

**For more information, we have representatives for all 50 states.  
Please call 800-338-1122 or visit [www.conteches.com](http://www.conteches.com).**

NOTHING IN THIS CATALOG SHOULD BE CONSTRUED AS A WARRANTY. APPLICATIONS SUGGESTED HEREIN ARE DESCRIBED ONLY TO HELP READERS MAKE THEIR OWN EVALUATIONS AND DECISIONS, AND ARE NEITHER GUARANTEES NOR WARRANTIES OF SUITABILITY FOR ANY APPLICATION. CONTECH MAKES NO WARRANTY WHATSOEVER, EXPRESS OR IMPLIED, RELATED TO THE APPLICATIONS, MATERIALS, COATINGS, OR PRODUCTS DISCUSSED HEREIN. ALL IMPLIED WARRANTIES OF MERCHANTABILITY AND ALL IMPLIED WARRANTIES OF FITNESS FOR ANY PARTICULAR PURPOSE ARE DISCLAIMED BY CONTECH. SEE CONTECH'S CONDITIONS OF SALE (AVAILABLE AT [WWW.CONTECHES.COM/COS](http://WWW.CONTECHES.COM/COS)) FOR MORE INFORMATION.

© 2026 Contech Engineered Solutions LLC, a QUIKRETE Company  
All rights reserved. Printed in USA.



Deck Drain Bro 6/26 PDF MC