

Military Readiness - Earth Covered Magazines

Who is Contech?

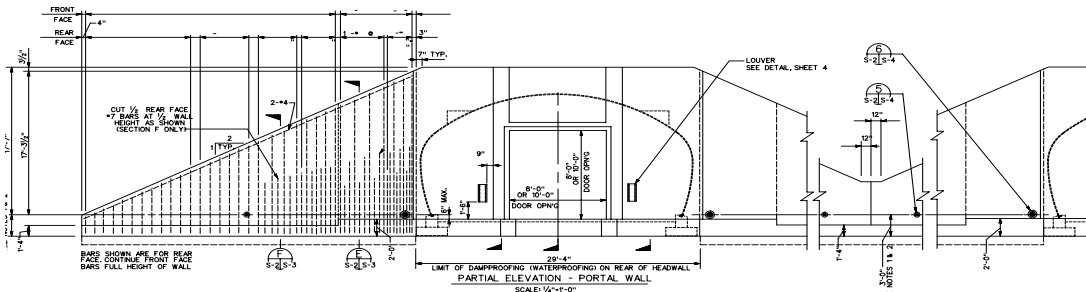
Contech® Engineered Solutions is the leading site solution provider of bridge, drainage, erosion control, soil stabilization, wastewater treatment and stormwater solutions in North America.

What Can Contech Do For You?

Let Contech's nationwide engineering group be an extension of your design team. A local Contech Project Consultant is available to work with you through the entire design process. From budgeting to engineered drawings, Contech provides comprehensive support with engineered solutions for all of your civil infrastructure needs.

Ammo Bunkers

Consisting of field bolted galvanized steel plates, Contech MULTI-PLATE® has a long history of strength, durability and economy. It is arranged and curved to make a variety of shapes, including round, pipe-arch, arch and ellipse (horizontal and vertical).



APPROVED STRUCTURE TYPES

Drawing #	Name	Structure #	Size (Rise x Span)	Design Entity	Rating
1404375-1404389	Composite, Circular Arch	SRA26-13	26'0" x 13' 0"	NAVFAC	7-Bar
1404390-1404398	Composite, Oval Arch	102A15-24	25'11" x 14'5"	NAVFAC	7-Bar
421-80-01	Steel, Semi-circular Arch	SRA26-13	26'0" x 13' 0"	USACE	7-Bar
421-80-03	Steel, Oval Arch	102A15-24	25'11" x 14'5"	USACE	7-Bar



Numerous structures have been installed in bases around the country for the past 35 years.