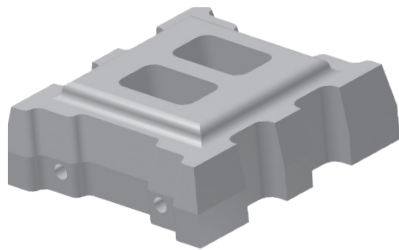
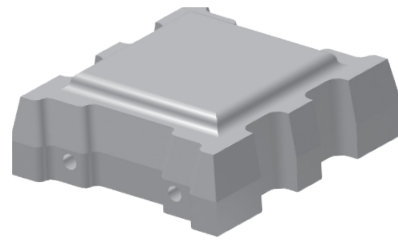


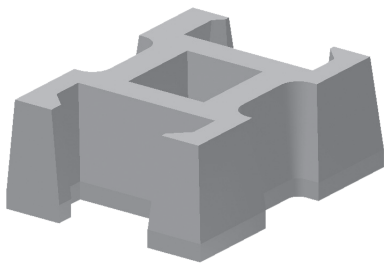
# ARMORTEC<sup>®</sup> Product Details



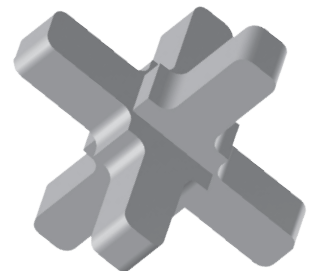
ArmorFlex<sup>®</sup> - Open Cell



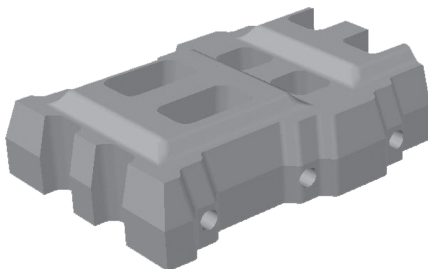
ArmorFlex<sup>®</sup> - Closed Cell



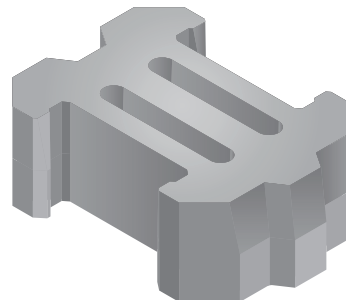
ArmorLoc<sup>®</sup>



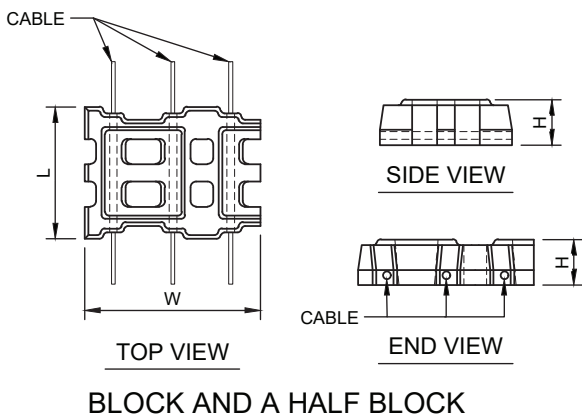
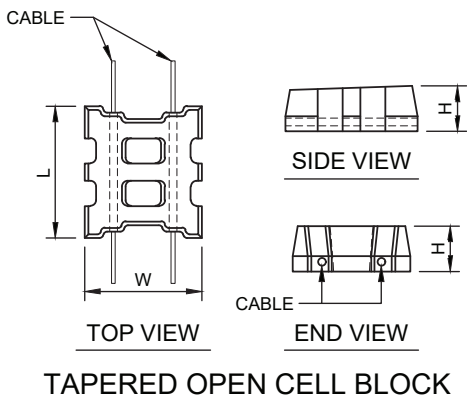
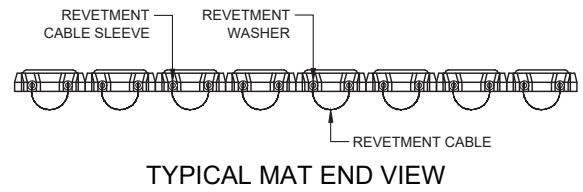
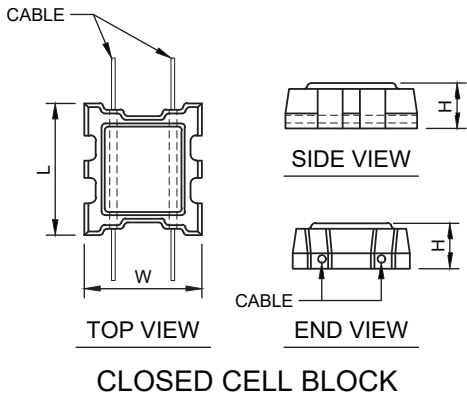
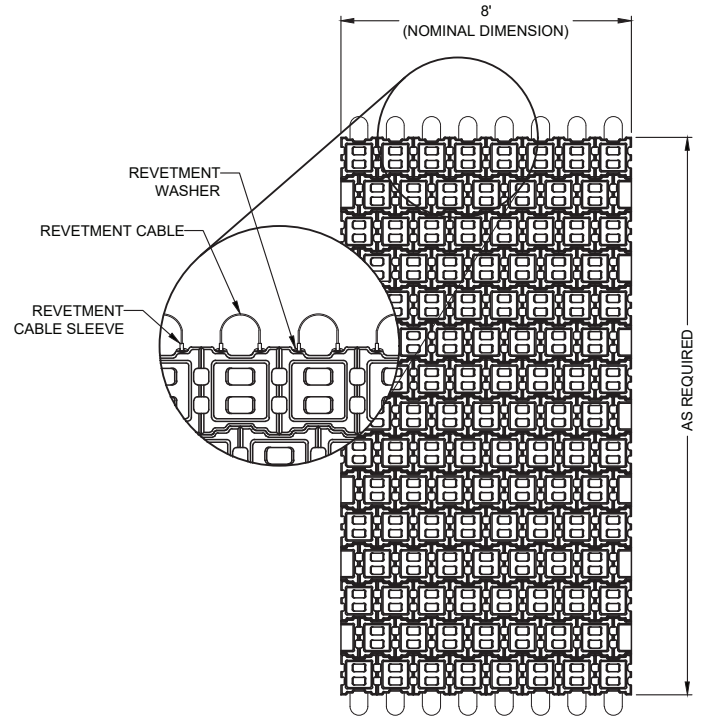
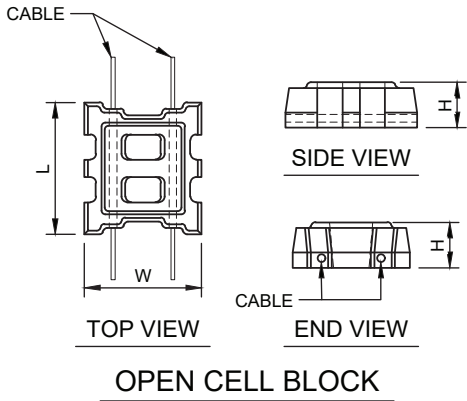
A-Jacks<sup>®</sup>



ArmorFlex<sup>®</sup> Block and a Half<sup>®</sup>

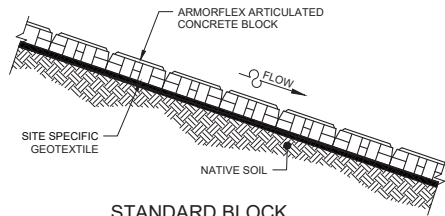


Geolink<sup>®</sup>

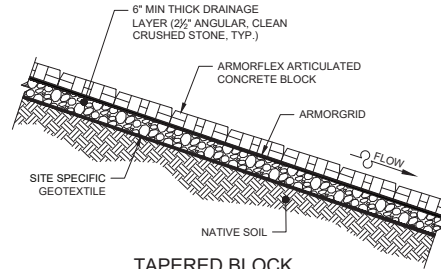


ArmorFlex Unit Specification						
Concrete Block Class	Nom. Dimensions (in.)			Gross Area/ (sq. ft.)	Typ. Block Weight	
	L	W	H		lbs	lbs/sq. ft.
<b>Open Cell - 20% Open Area</b>						
30S	13	11.6	4.75	0.98	33	35
50S	13	11.6	6	0.98	42	50
40	17.4	15.5	4.75	1.77	59	40
50	17.4	15.5	6	1.77	76	50
70	17.4	15.5	8.5	1.77	108	70
40L	17.4	23.6	4.75	2.58	97	40
50L	17.4	23.6	6	2.58	116	50
70L	17.4	23.6	8.5	2.58	174	70
<b>Closed Cell - 10% Open Area</b>						
45S	13	11.6	4.75	0.98	39	45
55S	13	11.6	6	0.98	50	55
45	17.4	15.5	4.75	1.77	71	45
55	17.4	15.5	6	1.77	91	55
85	17.4	15.5	8.5	1.77	136	85
45L	17.4	23.6	4.75	2.58	109	45
55L	17.4	23.6	6	2.58	138	55
85L	17.4	23.6	8.5	2.58	207	85
<b>High Velocity Application - Tapered Open Cell - 20% Open Area</b>						
40-T	17.4	15.5	4.75	1.77	58	40
50-T	17.4	15.5	6.00	1.77	75	50
70-T	17.4	15.5	8.50	1.77	109	70

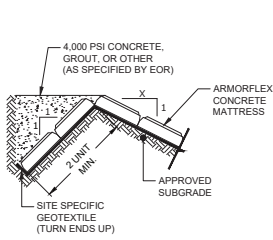
# ArmorFlex® cont. (not to scale)



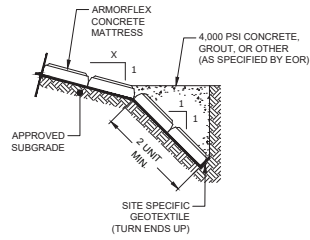
STANDARD BLOCK  
TYPICAL CROSS SECTION



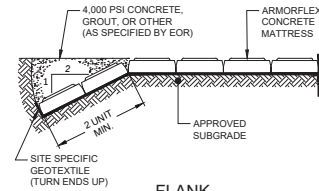
TAPERED BLOCK  
TYPICAL CROSS SECTION



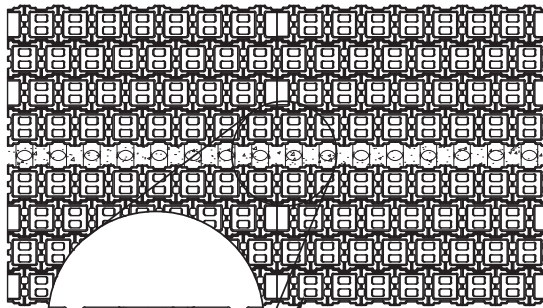
TOP OF SLOPE  
TERMINATION DETAIL



TOE OF SLOPE  
TERMINATION DETAIL

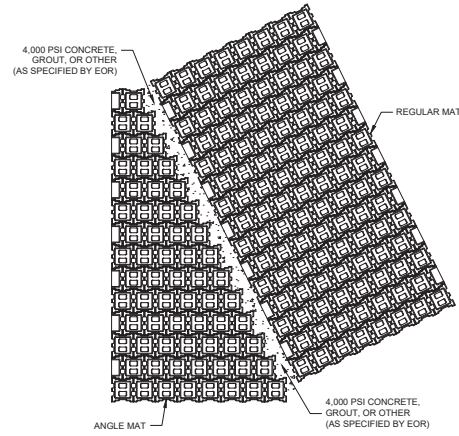


FLANK  
TERMINATION DETAIL



4,000 PSI CONCRETE, GROUT, OR OTHER (AS SPECIFIED BY EOR)  
REVEMENT CABLE  
ARMORFLEX CONCRETE UNIT  
GEOTEXTILE

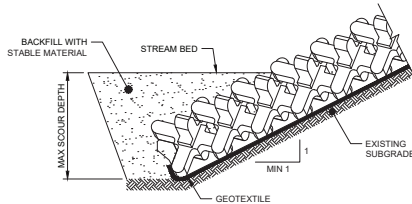
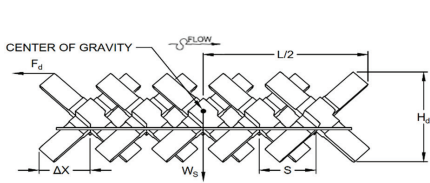
TYPICAL MAT TO MAT



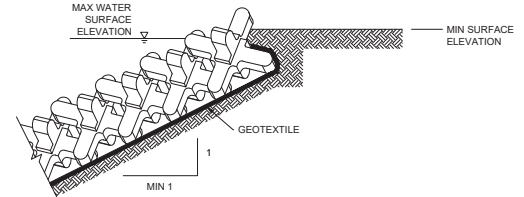
NOTE: ANGLE MATS WILL BE CONSTRUCTED BY OMITTING THE REQUIRED UNITS SO THE REQUIRED MAT DIMENSIONS CAN BE OBTAINED.

TYPICAL ANGLE MAT

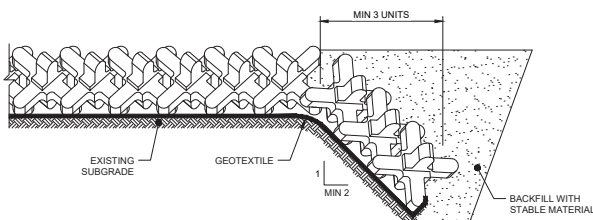
# A-Jacks® (not to scale)



TOE TERMINATION



TOP TERMINATION



FLANK TERMINATION

## A-Jacks Unit Specification

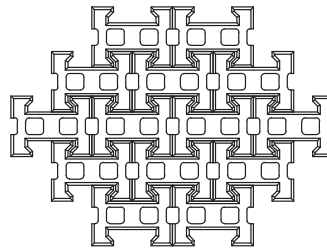
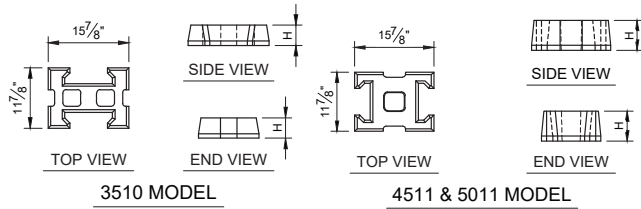
A-JACKS System	Min. Unit Weight (lbs)	Drag Coef. $C_d$	Spacing, S (ft)	Height, $H_d$ (ft)	$\Delta x$ (ft)
AJ-24	73.6	1.05	0.75	1.3	0.66
AJ-48	590.7	1.05	1.5	2.67	1.35

# ArmorLoc® (not to scale)

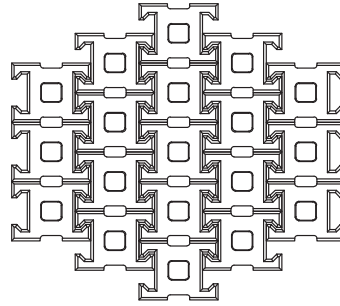
## ArmorLoc Unit Specification

CONCRETE BLOCK CLASS	OPEN AREA %	DIMENSIONS			GROSS AREA (SF)	MIN. BLOCK WEIGHT (LBS)
		L	W	H		
3510	25	15.875	11.875	4	1.0	30
4511	20	15.875	11.875	5.25	1.1	45
5011	20	15.875	11.875	6	1.1	50

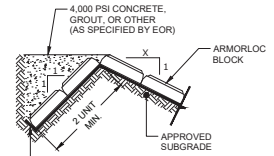
\*Open-cell block shown. Closed-cell block also available.



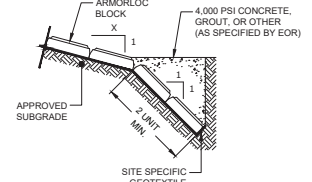
3510 PLAN VIEW



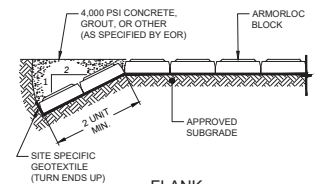
4511 & 5011 PLAN VIEW



TOP OF SLOPE TERMINATION DETAIL

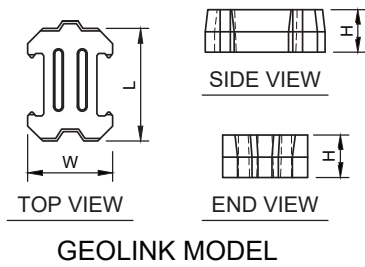


TOE OF SLOPE TERMINATION DETAIL

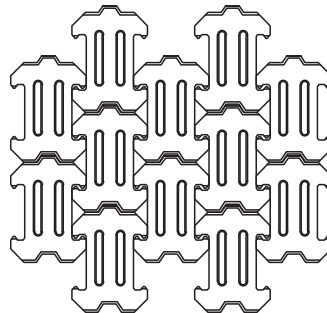


FLANK TERMINATION DETAIL

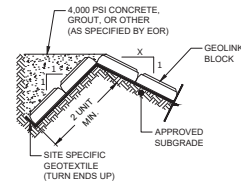
# Geolink® (not to scale)



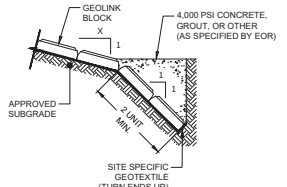
GEOLINK MODEL



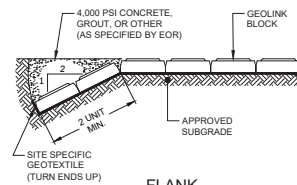
GEOLINK PLAN VIEW



TOP OF SLOPE TERMINATION DETAIL



TOE OF SLOPE TERMINATION DETAIL



FLANK TERMINATION DETAIL

## ArmorLoc Unit Specification

CONCRETE BLOCK CLASS	OPEN AREA %	DIMENSIONS			GROSS AREA (SF)	MIN. BLOCK WEIGHT (LBS)
		L	W	H		
GL4	20	16	12	4	1.12	36
GL6	20	16	12	6	1.12	55

## ARMORTEC Minimum Physical Requirements per ASTM D6684

MIN. DENSITY (IN AIR) LBS/FT <sup>3</sup>		MIN. COMPRESSIVE STRENGTH PSI		MAX WATER ABSORPTION LBS/FT <sup>3</sup>	
Avg. of 3 Units	Individual Unit	Avg. of 3 Units	Individual Unit	Avg. of 3 Units	Individual Unit
130	125	4,000	3,500	9.1	11.7