



**CONTECH**<sup>®</sup>  
ENGINEERED SOLUTIONS

Contech CSP Vent Pipe »  
Optimal Solution for Produce Storage

**CONTECH**<sup>®</sup>  
**PIPE SOLUTIONS**

# CSP Vent Pipe by Contech

STRONGER | ENHANCED ENDS | DURABLE | REUSABLE | INCREASED LOADS

## MEETING THE TEST OF TIME

Contech has over 50 years manufacturing Corrugated Steel Pipe (CSP) Vent Pipe with a service life expectancy of 25 to 40 years.

## SANITATION

Metal Vent Pipe prevents particles and moisture from becoming trapped in the wall profile. Metal Vent Pipe can be sanitized. Dual wall plastic is difficult if not impossible to sanitize when particles enter through stress cracks and become trapped in corrugations.

## EFFICIENT AIR FLOW DESIGN

Custom hole patterns and rifled corrugation can provide enhanced air flow.

## DURABILITY

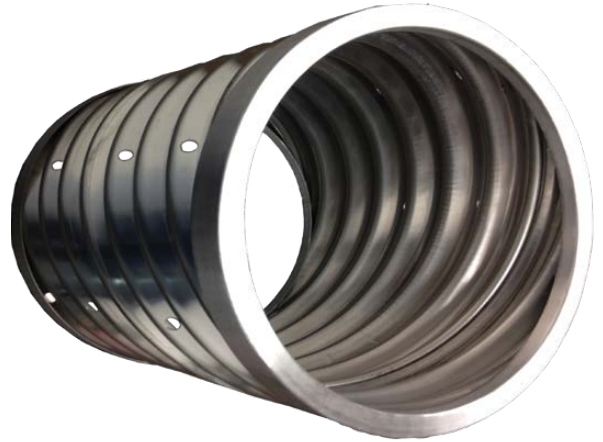
- 3X THE STRENGTH OF PLASTIC
- Pile heights of 20 feet plus are possible with CMP Vent Pipe.
- The strength of plastic decreases over time. Studies have shown a 20% decrease in strength the first year. Strength continues to decrease with each subsequent installation. In addition, plastic pipe is susceptible to UV degradation.

## ENHANCED ENDS

Enhanced end flanges are available for increased joint tightness. The flush connections align your rows quick and easy.

## CUSTOM DESIGN OPTIONS

Contech CSP Vent Pipe is manufactured per industry standards of 1-1-3/4" holes on the bottom of the pipe allowing more air flow to be pushed through the entire pile. Custom designs are available including smaller holes around the circumference without jeopardizing the structural integrity. Options include 3/8" fully perforated, strip perforations, and pin hole perforation for grain.



FULLY PERFORATED



STRIP PERFORATIONS



PIN HOLE PERFORATIONS



# Metal vs Plastic Pipe Product Comparison »

## STRENGTH

Metal Vent Pipe does not lose strength over time as do plastic pipe products. Because Polypropylene and Polyethylene pipe are “liquid” plastics they are more susceptible to creep under loads.



Corrugated Polypropylene Plastic with smooth interior under load creates annular corrugations.

**CSP spiral corrugations** have better flow characteristics than plastic annular corrugations.

## MATERIAL PROPERTIES

| PIPE TYPE | Initial Modulus of Elasticity (psi) | 75-YR Modulus of Elasticity (psi) | Initial Yield Strength (psi) | 75-YR Yield Strength (psi) |
|-----------|-------------------------------------|-----------------------------------|------------------------------|----------------------------|
| CSP       | 29,000,000                          | 29,000,000                        | 33,000                       | 33,000                     |
| PE        | 110,000                             | 21,000 (80% reduction)            | 3,000                        | 900 (70% reduction)        |
| PP        | 175,000                             | 28,000 (84% reduction)            | 3,500                        | 1,000 (71% reduction)      |

## THERMAL EXPANSION

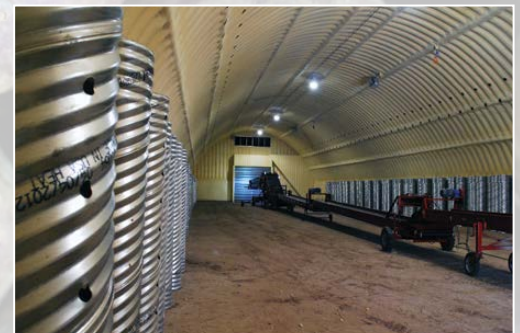
A high thermal expansion in the pipe can lead to pipe movement and poor joint integrity. Polypropylene and Polyethylene are “liquid” plastics and have a high thermal expansion and contraction. Polypropylene and Polyethylene have 12 times the thermal expansion and contraction of carbon steel.\*

| Coefficient of Thermal Expansion* |              |            |
|-----------------------------------|--------------|------------|
| PIPE TYPE                         | 10-6 in/in F | 10-6 m/m C |
| CSP Vent Pipe                     | 6.5          | 11.7       |
| Corrugated Polypropylene          | 83           | 150        |

## AIR FLOW

Helically Corrugated Steel Pipe (spiral) has a lower Manning’s “n” than corrugated plastic pipe with smooth interior when installed under a constant load. The thin plastic inner wall may buckle when a load is applied, creating annular corrugations throughout the pipe. Helical CSP is made in a spiral fashion and creates a rifle effect allowing smooth air flow.

INTERESTED IN **CSP VENT PIPE** BY CONTECH? LEARN MORE TODAY 800-338-1122.





Contech® Engineered Solutions provides innovative, cost-effective site solutions to engineers, contractors and developers on projects across North America. Our portfolio includes bridges, drainage, erosion control, retaining wall, sanitary sewer and stormwater management products.



STORMWATER SOLUTIONS



PIPE SOLUTIONS



STRUCTURE SOLUTIONS

For more information call:

|                                      |              |
|--------------------------------------|--------------|
| Corporate Office - Ohio (Cincinnati) | 513-645-7000 |
| California (Roseville)               | 800-548-4667 |
| Colorado (Denver)                    | 720-587-2700 |
| Florida (Orlando)                    | 321-348-3520 |
| Maine (Scarborough)                  | 207-885-9830 |
| Maryland (Baltimore)                 | 410-740-8490 |
| Oregon (Portland)                    | 503-258-3180 |
| Texas (Dallas)                       | 972-590-2000 |

[www.ContechES.com](http://www.ContechES.com) | 800-338-1122



©2021 Contech Engineered Solutions LLC, a QUIKRETE Company  
800.338.1122

[www.ContechES.com](http://www.ContechES.com)

All Rights Reserved. Printed in the USA.

NOTHING IN THIS CATALOG SHOULD BE CONSTRUED AS A WARRANTY. APPLICATIONS SUGGESTED HEREIN ARE DESCRIBED ONLY TO HELP READERS MAKE THEIR OWN EVALUATIONS AND DECISIONS, AND ARE NEITHER GUARANTEES NOR WARRANTIES OF SUITABILITY FOR ANY APPLICATION. CONTECH MAKES NO WARRANTY WHATSOEVER, EXPRESS OR IMPLIED, RELATED TO THE APPLICATIONS, MATERIALS, COATINGS, OR PRODUCTS DISCUSSED HEREIN. ALL IMPLIED WARRANTIES OF MERCHANTABILITY AND ALL IMPLIED WARRANTIES OF FITNESS FOR ANY PARTICULAR PURPOSE ARE DISCLAIMED BY CONTECH. SEE CONTECH'S CONDITIONS OF SALE (AVAILABLE AT [WWW.CONTECHES.COM/COS](http://WWW.CONTECHES.COM/COS)) FOR MORE INFORMATION.



Vent Pipe Bro 11/21 PDF MC

